

Jefferson County Land & Water Conservation Committee Agenda

**REVISED 08-18-2025*

“Working Together to Protect & Enhance the Environment”

Jefferson County Courthouse ~ 311 S Center Ave, County Board Room - C2063 ~ Jefferson, WI 53549

Wednesday, August 20, 2025 @ 8:30am

[Join the meeting now](#)

Meeting ID: 284 921 490 541 2 - Passcode: wx2737Jk

Committee Members: Meg Turville-Heitz (Chair), Matt Foelker (Vice-Chair) (UW), Margaret Burlingham (PACE), Walt Christensen, Elizabeth Hafften (UW), Cassie Richardson, and Scott Schultz (Ag)

1. Call to Order
2. Roll Call (Establish a Quorum)
3. Certification of Compliance with the Open Meetings Law
4. Review of the Agenda
5. Approval of the July 16, 2025 Meeting Minutes
6. Public Comment (members of the public who wish to address the Committee on specific agenda items must register their request at this time)
7. Communications
 - Department of Agriculture, Trade & Consumer Protection (DATCP) Report
8. Discussion on Departmental Updates
9. Discussion on Updates from Land+Water Meetings
10. Discussion on Southern Area Association Tour
11. Discussion and Possible Action on Amending a Conservation Reserve Enhancement Program (CREP) Conservation Plan
12. Discussion on Producer-Led Groups: Jefferson County Soil Builders & Rock River Regenerative Graziers
13. Discussion and Possible Action on Notices of Noncompliance - Farmland Preservation Program (FPP)
14. ***Discussion and Possible Action on Review of Notice of Noncompliance - FPP for Deb Hall-Kind**
15. Discussion and Possible Action on Cancellation of Notices of Noncompliance - FPP
16. Discussion and Possible Action on Purchase of Agriculture Conservation Easement (PACE) Applications & Baseline Documentation
17. Discussion and Possible Action on 2026 Department Fees
18. Discussion on 2026 Department Budget
19. Review of the Monthly Financial Report
20. Discussion on Items for the Next Agenda
 - Next Scheduled Meeting September 17, 2025 @ 8:30am in Room C2063
21. Adjournment

A quorum of any Jefferson County Committee, Board, Commission, or other body, including the Jefferson County Board of Supervisors, may be present at this meeting.

Individuals requiring special accommodation for attendance at this meeting should contact the County Administrator 24 hours prior to the meeting at (920) 674-7101 so appropriate arrangements can be made.

Land & Water Conservation Committee Minutes

July 16, 2025

1. Call to Order:

The monthly meeting was called to order by Meg Turville-Heitz at 8:30am. Committee Members Meg Turville-Heitz (Chair), Matt Foelker (UW) (Vice-Chair), Margaret Burlingham (PACE), Walt Christensen, and Scott Schultz (Ag), were present. Also in attendance were Patricia Cicero, Director, Land & Water Conservation Department (LWCD); Kim Liakopoulos, LWCD; Dave Hoffman, LWCD; Joe Strupp, LWCD; Michael Luckey, County Administrator (via Teams); Danielle Thompson, County Corporation Counsel; Zach Thayer, Natural Resource Conservation Service (NRCS); and Savannah Warwick, NRCS. Cassie Richardson was excused. Elizabeth Hafften (UW) was absent.

- Others in Attendance: Matt Zangl, Director, Planning and Development; Deb Hall-Kind; Anita Martin; Sue Marx.

2. Roll Call (Establish a Quorum):

A quorum was established.

3. Certification of Compliance with the Open Meetings Law:

It was determined that the committee was in compliance with the Open Meetings Law.

4. Review of the Agenda:

The agenda was reviewed by the committee members. No changes were proposed.

5. Approval of the June 18, 2025 Meeting Minutes:

Foelker made a motion to approve the June 18, 2025 meeting minutes as written, Schultz seconded. Motion passed 5/0.

6. Public Comment:

Sue Marx gave public comment on agenda item #13 and item #17.

Deb Hall-Kind gave public comment on agenda item #15.

7. Communications:

- Department of Agriculture, Trade & Consumer Protection (DATCP) Report.

8. Natural Resources Conservation Service (NRCS) Report:

Zach Thayer and Savannah Warwick discussed current NRCS program applications. Warwick discussed internal staffing adjustments and possible staffing reductions due to the current administration.

9. Discussion on Departmental Updates:

Cicero attended a Rock River flooding work group meeting. Cicero and Hoffman had a discussion with the Financial Empowerment Center regarding the Purchase of Conservation Easement (PACE) program and other LWCD programs. Cicero and Colton Hutchinson provided nitrate screening at the Jefferson County Fair. Hutchinson assisted the Parks Department with river cleanup. Hutchinson is conducting field work - lake water quality, stream flow, plant surveys, shoreland site visits with landowners, volunteer stream monitoring training, and assisting the Lake Ripley Management District with field work for a Department of Natural Resources (DNR) grant. Strupp and Sam Peterson finished Farmland Preservation Program (FPP) spot checks of the northeast quadrant of the county. Strupp and Peterson were trained on new US Department of Agriculture software. Hoffman has completed PACE annual inspections and Conservation Reserve Enhancement Program (CREP) monitoring. Liakopoulos is conducting an audit of inactive FPP files.

- 10. Discussion on County Owned Farmland: Compaction, Drainage, Future Farming and Vegetation, and Potter's Field Access:** LWCD staff is working with the City of Jefferson and their consultant regarding a few issues on the farm resulting from construction. LWCD staff is working on a plan to address compaction, drainage, and new access to Potter's field.
- 11. Discussion on Manure Complaint Report:**
Cicero and Strupp discussed the manure complaint report and answered committee questions.
- 12. Discussion on Southern Area Association Tour:**
The tour is September 4th. Cicero is finalizing a few details.
- 13. Discussion and Possible Action on Joint Development Agreement for Whitewater Solar Project:**
The committee discussed the agreement. Thompson and Zangl answered committee questions. The agreement is being reviewed by the Planning & Zoning Committee and the Executive Committee before being submitted to the County Board for consideration in September.
- 14. Discussion on Producer-Led Groups: Jefferson County Soil Builders (JCSB) & Rock River Regenerative Graziers (R3G):** JCSB will have a drone demonstration at the Hundt farm in August. R3G is having a beef grazing demonstration hosted by Link Family Farms on July 31st. R3G received a grant from the Sand County Foundation for \$50,000.
- 15. Discussion and Possible Action on Notices of Noncompliance - Farmland Preservation Program (FPP):**
Aztalan Ancient Grains LLC, Deb Hall-Kind, Curtis & Mary Ann Pernat
Foelker made a motion to accept the notices, Burlingham seconded. Motion passed 5/0.
- 16. Discussion and Possible Action on Cancellation of Notices of Noncompliance - FPP:**
Daniel Lemke Jr.
Christensen made a motion to accept the notice, Foelker seconded. Motion passed 5/0.
- 17. Discussion and Possible Action on Purchase of Agriculture Conservation Easement (PACE) Applications & Baseline Documentation:** No new updates.
- 18. Discussion on Purchase of Agricultural Conservation Easement Program Overview, Ranking and Fees:**
Hoffman gave an overview of the PACE program and answered committee questions.
- 19. Discussion and Possible Action on 2026 Departmental Fees:**
Cicero outlined departmental fees and discussed changes. A new fee structure was discussed for the PACE program. Christensen made a motion to change the PACE application fees: 1. application acceptance fee = \$400.00, 2. ranking initiation process fee = \$400.00, 3. title search/appraisal fee = \$1,400.00, Foelker seconded. Motion passed 5/0. Schultz made a motion to increase the fee for a full nutrient management class to \$100.00, increase the fee for the nutrient management update class to \$30.00, and establish a delivery fee for the tree planter or sprayer to \$150.00 per trip, Christensen seconded. Motion passed 5/0.
- 20. Discussion on 2026 Department Budget:**
Cicero informed the committee about an increase to the DATCP staffing grant this year and discussed the 2026 budget process.
- 21. Review of the Monthly Financial Report:**
The most recent statement of revenues and expenditures was distributed.
- 22. Discussion on Items for the Next Agenda:**
Possible agenda items include: CREP Conservation Plan Update
• **Next Scheduled Meeting:** August 20, 2025 at 8:30am in Room C2063
- 23. Adjournment:**
Foelker made a motion to adjourn at 10:30am, Christensen seconded. Motion passed 5/0.

Jefferson County Land and Water Conservation Department
311 S Center Ave
Jefferson WI 53549
920.674.7110

Conservation Plan

CREP Area Management

The CREP Area is referred to and described as “Amended Easement Area A” per Jefferson Co. Register of Deeds recorded document #1192018 (previously known as “easement area B” per recorded document #1114373), DATCP Agreement #860. Easement Area A is also known as and referred to as Field 13B on the USDA-Tract Map and Jefferson Co. LWCD Conservation Plan. Primary management goals of Easement Area A include but aren’t limited to perpetually maintaining herbaceous cover and control of woody species. Easement Area A is defined by two different units: Upland Buffer Area and CP23-Wetland Area; and is defined in the attached map.

Upland Buffer Area:

All practices are subject to DATCP approval and landowner must obtain county level approval prior to each management activity.

Spot mowing:

Add a provision to allow for spot mowing of Easement Area A under the following guidelines:

- Must obtain county level approval prior to each mowing.
- Used as a management tool for controlling invasive or exotic species of weeds and brush.
- Mowing should be timed to maximize control of the target species.
- Mowing should be limited to no greater than 20% of a field in a single year and the mowing location should be changed from year to year.
- Vegetation may not be cut lower than six (6) inches.
- Recommend mowing or cutting during winter months during frozen ground conditions.
- Refer to NRCS conservation practice standards 314-Brush Management for guidance.
- Mowing must coincide with suitable ground conditions and will not occur in areas where standing water is present on the site or when the soil is saturated or wet and will be timed to avoid rutting, soil compaction, or degradation of conservation cover.

Spot spraying:

Add a provision to allow for spot spraying of Easement Area A under the following guidelines:

- Must obtain county level approval prior to each application.
- Used only as a management tool to control invasive or exotic species of weeds and brush.
- Allowed only after approval of a spray plan by the County Land Conservation Department. Plan must include details of the type, method, and timing of chemical treatment along with the targeted species.

- Notice must be given to the County Land Conservation Department prior to each spraying to allow staff to monitor the practice and its effects.
- Spraying is limited to the methods and chemicals listed in the amended conservation plan and approved spray plan.
- Refer to NRCS conservation practice standard 315- Herbaceous Weed Treatment for guidance.

Haying:

Add a provision to allow for haying of Easement Area A under the following guidelines:

- Haying is strictly prohibited to the "Upland Buffer Area" (UAB) shown on the attached map (4.72 Acres) and must be done above the 832' elevation mark.
- Prescribed conservation practice in the conservation plan must be maintained as is defined by the applicable NRCS Wisconsin Job Sheet for the conservation practice, excepting any provisions defined by the DATCP.
- Hay no more than once in a 12-month period.
- Vegetation may not be cut lower than six (6) inches.
- All cutting or harvesting of hay must be done outside of the primary nesting season as defined in the CREP easement contract as May 15 through July 31.
- Under no circumstances is spreading manure or grazing permitted on the CREP easement.
- If over-seeding to improve forage value, it must be an approved mix suited for the site and greater than 50% of the seed mixture must consist of a minimum of two (2) grass species.
- Hay bales must be removed from the field to avoid smothering vegetation.
- Haying must coincide with suitable ground conditions and will not occur in areas where standing water is present on the site or when the soil is saturated or wet and will be timed to avoid rutting, soil compaction, or degradation of conservation cover.
- Interseeding or dormant seeding is allowed to improve forage stand densities with warm or cool season mixes. Refer to the two seed mixes in Table 1 and 2 for seed species and rates.

Prescribed Burning:

Add a provision to allow for prescribed burning of Easement Area A under the following guidelines:

- Prescribed burning is allowed to control invasive and woody species and stimulate native growth.
- Prescribed burns must follow DNR and/or township rules regarding burning and permits.
- A burn must follow a plan.
- Must be conducted by trained personnel with adequate equipment to control the burn.
- Prescribed burns are allowed no more than one time every three years.
- Burn breaks should be mowed at least one time in fall prior to burn year. Must maintain six (6) inch perennial cover. Permanent trails not permitted.
- Burn plan must be kept on file with the landowner; however, it does not need to be submitted to the LCD or DATCP.
- Refer to NRCS conservation practice standard 338- Prescribed Burning (NRCS approval is not needed per standard's instructions).

CP23- Wetland Area:

All practices are subject to DATCP approval and landowner must obtain county level approval prior to each management activity.

Spot mowing:

Add a provision to allow for spot mowing of Easement Area A under the following guidelines:

- Must obtain county level approval prior to each mowing.
- Used as a management tool for controlling invasive or exotic species of weeds and brush.
- Mowing should be timed to maximize control of the target species.
- Mowing should be limited to no greater than 20% of a field in a single year and the mowing location should be changed from year to year.
- Vegetation may not be cut lower than six (6) inches.
- Recommend mowing or cutting during winter months during frozen ground conditions.
- Refer to NRCS conservation practice standards 314-Brush Management for guidance.
- Mowing must coincide with suitable ground conditions and will not occur in areas where standing water is present on the site or when the soil is saturated or wet and will be timed to avoid rutting, soil compaction, or degradation of conservation cover.

Spot spraying:

Add a provision to allow for spot spraying of Easement Area A under the following guidelines:

- Must obtain county level approval prior to each application.
- Used only as a management tool to control invasive or exotic species of weeds and brush.
- Allowed only after approval of a spray plan by the County Land Conservation Department. Plan must include details of the type, method, and timing of chemical treatment along with the targeted species.
- Notice must be given to the County Land Conservation Department prior to each spraying to allow staff to monitor the practice and its effects.
- Spraying is limited to the methods and chemicals listed in the amended conservation plan and approved spray plan.
- Refer to NRCS conservation practice standard 315- Herbaceous Weed Treatment for guidance.

Prescribed Burning:

Add a provision to allow for prescribed burning of Easement Area A under the following guidelines:

- Prescribed burning is allowed within the wetland area as another tool to control invasive, woody species and stimulate native growth due to mechanical methods of brush control being severely limited due to wetness of area.
- Prescribed burns must follow DNR and/or township rules regarding burning and permits.
- A burn must follow a plan.
- Must be conducted by trained personnel with adequate equipment to control the burn.
- Prescribed burns are allowed no more than one time every three years.
- Burn breaks should be mowed at least one time in fall prior to burn year. Must maintain six (6) inch perennial cover. Permanent trails not permitted.

- Burn plan must be kept on file with the landowner; however, it does not need to be submitted to the LCD or DATCP.
- Refer to NRCS conservation practice standard 338- Prescribed Burning (NRCS approval is not needed per standard's instructions).

Tract	Field	Acres
904	13B (Easement Area A)	11.5
	Total	11.5

Table 1: Warm Season Grass-Sedge Seed Mix		
Scientific	Common	Lbs./Ac.
<i>Andropogon gerardii</i>	Big Bluestem	2
<i>Bromus ciliatus</i>	Fringed Brome	1.5
<i>Carex crinita</i>	Fringed Sedge	0.25
<i>Carex vulpinoidea</i>	Brown Fox Sedge	0.25
<i>Elymus canadensis</i>	Canada Wild Rye	1.5
<i>Panicum virgatum</i>	Switchgrass	0.125
<i>Sorghastrum nutans</i>	Indian Grass	1
Total		6.625

Table 2: Cool Season Grass-Forb Seed Mix		
Scientific	Common	lbs/ac
<i>Phleum pratense</i>	Timothy	1
<i>Poa pratensis</i>	Kentucky Bluegrass	3
<i>Lolium perenne</i>	Perennial Ryegrass	2
<i>Trifolium repens</i>	White Clover	1
Total		8

CONSERVATION PLAN AGREEMENT

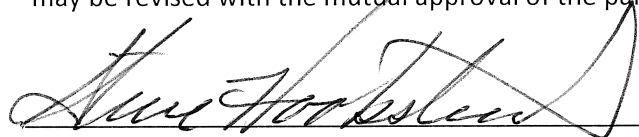
Your conservation plan has been developed for the following tracts: Tract 904, Field 13B

Your conservation plan meets the compliance objectives for the following checked programs:

- ☐ WISCONSIN FARMLAND PRESERVATION PROGRAM
- ☐ USDA PROGRAMS ADMINISTERED BY THE NATURAL RESOURCES CONSERVATION SERVICE AND FARM SERVICE AGENCY
- ☐ CONSERVATION REQUIREMENTS FOR NUTRIENT MANAGEMENT

I (We) agree with the conservation practices and installation schedules indicated in this conservation plan. I (We) understand that, when these conservation practices are applied to the land and maintained, the conservation plan

will meet the requirements for the programs marked above. I (We) also understand that this conservation plan may be revised with the mutual approval of the parties signing below.



(Landowner)



(Date)

(Operator)

(Date)

(Operator)

(Date)

This conservation plan meets the requirements for the program(s) checked above and is consistent with the Field Office Technical Guide.

(Conservation Planner)

(Date)

(County Conservationist)

(Date)

(District Conservationist)

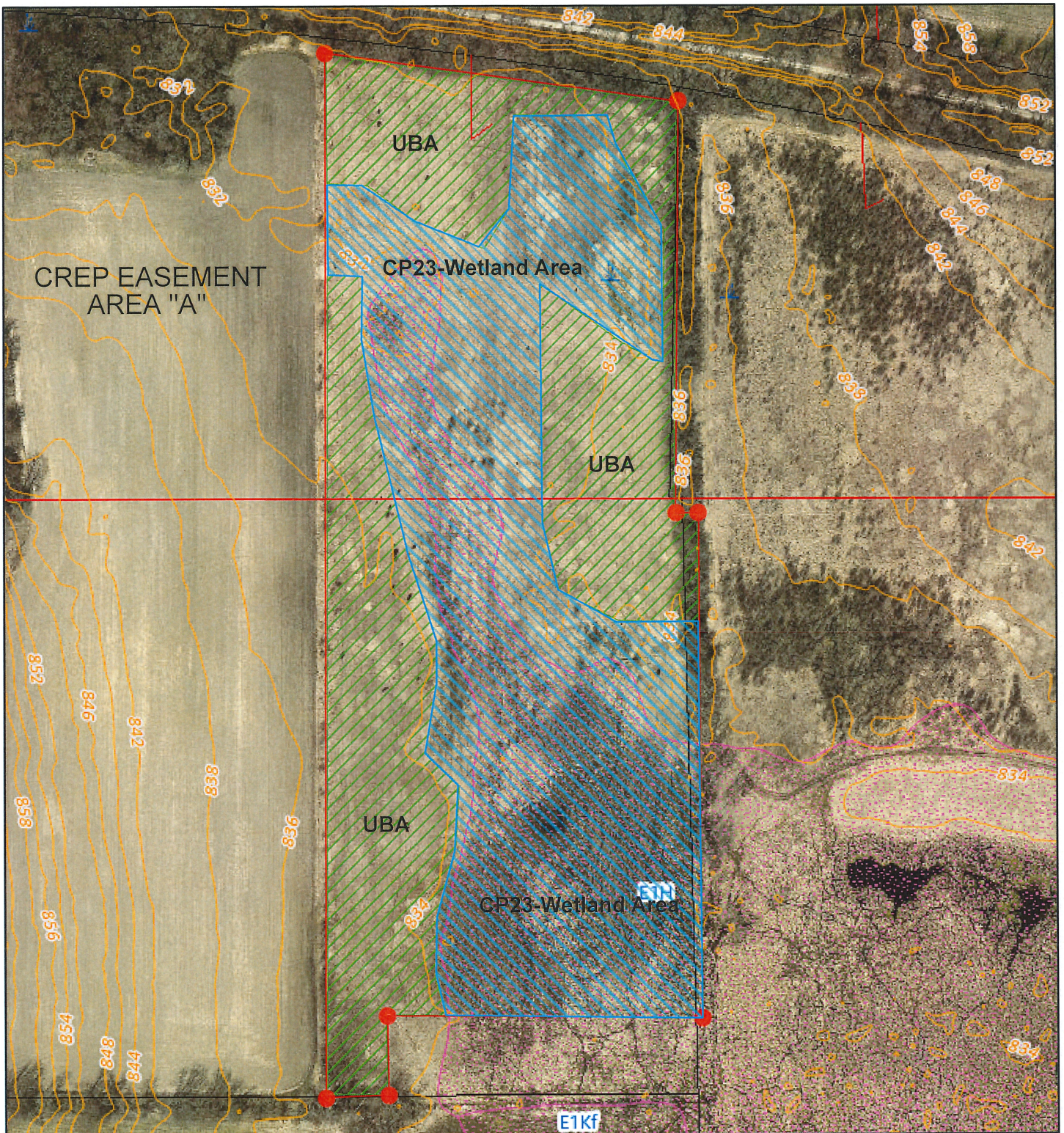
(Date)

This conservation plan is approved by the Jefferson County Land and Water Conservation Committee.

(LCC Representative)

(Date)

Hookstead Easement Area



7/31/2025

2 Foot Contours

2 ft contour interval

PLSS Sections

CREP easement points Jefferson WISCRSJeffersonFt

CREP easement areas Jefferson WISCRSJeffersonFt

Cartographic Lines

Property Boundary

Map Hooks

DNR UPDATED < 2 Ac. Wetland

DNR UPDATED > 2 Ac. Wetlands

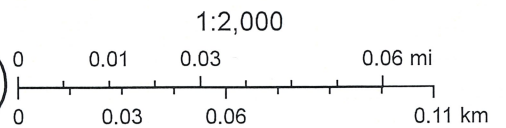
Upland Buffer Area (UBA)- 4.72 Acres

WJJEFF23_Combined_2284656E349536N.sid

Red: Band_1

Green: Band_2

Blue: Band_3



LIO, Jefferson County Agricultural Preservation and Land Use Plan



Drone Seeding Field Day

Jefferson County Soil Builders

- Drone demonstration of cover crop seeding into a standing soybean field.
- Established multi-species cover crop in a harvested wheat field.
- Retired UW-Extension researcher and local farmer Kevin Shelley



8700 block, Perry Rd, Cambridge, WI
½ mile east of Hering's Lake Ripley Inn on Highway A & Perry Rd.

WEDNESDAY | SEPT 3 | 5PM – 7PM

Questions?



SPeterson@jeffersoncountywi.gov



920-674-7112

Fee Schedule for Land and Water Conservation Department				
		Rate	7/16/2025	8/20/2025
ATCP 51 Livestock Siting Fee				
	Review of Full Livestock Siting Application	750		
	Review of Separate Worksheets in the Case of Amendments			
	Worksheet 1-Animal Units	50		
	Worksheet 2-Odor Management	200		
	Worksheet 3-Waste and Nutrient Management	150		
	Worksheet 4-Waste Storage Facilities	300		
	Worksheet 5-Runoff Management	200		
Animal Waste Storage Ordinance				
	Closure	-		
	Gallons of Storage 1 - 1,000,000	150		
	Gallons of Storage 1,000,001 - 3,000,000	200		
	Gallons of Storage 3,000,001 and Greater	300		
Non-Metallic Mining				
	Review Fee - One Time			
	Mine Site Size - 1 to 25 Acres	900		
	Mine Site Size - 26 to 50 Acres	1,200		
	Mine Site Size - 51 or More Acres	1,500		
	Expedited Review Fee	double		
	Annual Fee Table			
	Inactive (County \$140, DNR \$15)	155		
	1 to 5 Acres (County \$300, DNR \$35)	335		
	6 to 10 Acres (County \$475, DNR \$70)	545		
	11 to 15 Acres (County \$650, DNR \$105)	755		
	16 to 25 Acres (County \$825, DNR \$140)	965		
	26 to 50 Acres (County \$935, DNR \$160)	1,095		
	51 Acres or More (County \$995, DNR \$175)	1,170		
Farmland Preservation Program				
	Farmland Preservation Annual Certification by May 1	35		
	Farmland Preservation Annual Certification after May 1	70		
	Cancellation of Notice of Non-Compliance	100		
	Certificate of Compliance	35		
	Replacement Copy of Certificate of Compliance	5		
	Nutrient Management Full Class	50	100	100
	Nutrient Management Update Class	20	30	30
Purchase of Agricultural Conservation Easement Program				
	Application Fee		400	0
	Ranking and Processing Fee	750	400	400
	Appraisal Fee		1,400	1,400
Tree Planter Rental, tax is additional		100 for up to 10 days		
Tree Sprayer Rental, tax is additional		100 for up to 10 days		
Delivery/pick up of planter/sprayer			\$150/trip	\$150/trip
Tree Spade Rental (refundable deposit when spade is returned)		80		
Soil Probe Rental (refundable deposit when probe is returned)		65		

NEXT YEAR / CURRENT YEAR BUDGET ANALYSIS

PROJECTION: 2601		2026 BUDGET		FOR PERIOD 99				
ACCOUNTS FOR:		2024	2025	2025	2025	2025	2026	
General Fund		ACTUAL	ORIG BUD	REVISED BUD	ACTUAL	PROJECTION	FIN COMM	COMMENT
12401	Land Conservation							
12401	411100 Gen Prop T	-394,139.04	-388,486.81	-388,486.81	-226,617.30	-394,139.07	-374,248.26	
12401	421001 St Aid	-210.52	.00	.00	.00	-170.62	-125.00	
12401	421001 24407 St Aid	-183,527.00	-198,798.00	-198,798.00	.00	-198,798.00	-251,710.00	
12401	421001 24408 St Aid	-13,003.37	-13,003.36	-13,003.36	-11,703.02	-13,003.36	-13,003.36	
12401	421001 24410 St Aid	-5,550.00	-5,550.00	-5,900.00	-1,462.50	-5,850.00	-5,932.00	
12401	424001 22224 Fed Grants	-28,910.37	.00	.00	.00	.00	.00	
12401	432099 Oth Per	.00	-150.00	-150.00	.00	.00	-150.00	
12401	451020 Other Fees	-40.00	-200.00	-200.00	-180.00	-180.00	-240.00	
12401	451421 Crep Canc	.00	-280.00	-280.00	-34.49	-100.00	-100.00	
12401	457031 24100 Adm Rev	.00	-1,150.00	-1,150.00	.00	-1,150.00	.00	
12401	458001 Tree Sales	-6,866.00	-8,500.00	-8,500.00	-8,282.33	-8,282.33	-8,180.00	
12401	458005 Ag & Hort	-200.00	-100.00	-100.00	-100.00	-100.00	-100.00	
12401	458009 Lvestk App	-250.00	-1,500.00	-1,500.00	-500.00	-1,250.00	-750.00	
12401	458013 Farm Cert	-15,755.00	-23,970.00	-23,970.00	-20,605.00	-21,690.00	-22,000.00	
12401	472007 24410 Mun Othr	-1,800.00	-1,800.00	-1,800.00	.00	-1,800.00	-1,800.00	
12401	472337 24409 Muni Rev	-12,450.92	-15,000.00	-15,000.00	-4,093.92	-12,000.00	-15,000.00	
12401	480102 24100 Misc Reimb	.00	-1,500.00	-1,500.00	.00	-1,210.00	.00	
12401	485200 24411 Donat Res	.00	.00	-4,958.56	.00	.00	.00	
12401	511110 Salary	102,589.46	106,918.63	106,918.63	60,234.25	101,992.79	112,609.20	
12401	511210 Wage Reg	326,751.83	346,441.17	346,441.17	199,055.82	338,290.51	367,495.04	
12401	511210 24409 Wage Reg	9,873.86	.00	.00	.00	.00	.00	
12401	511220 Wage Ovt	3.70	309.18	309.18	.00	.00	.00	
12401	511240 Wage Temp	.00	.00	.00	.00	.00	7,248.02	
12401	511240 24410 Wage Temp	6,933.75	7,170.00	7,520.00	4,022.21	7,170.00	.00	
12401	511330 Wage Long	375.00	375.00	375.00	.00	375.00	375.00	
12401	512141 SS	30,970.74	32,155.84	32,155.84	18,833.61	31,997.53	34,788.41	
12401	512141 24409 SS	773.17	.00	.00	.00	.00	.00	
12401	512141 24410 SS	530.52	.00	.00	307.68	246.72	.00	
12401	512142 Ret (Emlr)	29,185.00	31,139.06	31,139.06	17,541.69	30,860.73	33,730.50	
12401	512142 24409 Ret (Emlr)	662.36	.00	.00	.00	.00	.00	
12401	512144 Health	68,972.85	66,840.79	66,840.79	33,537.30	65,831.68	66,117.86	
12401	512144 24409 Health	713.78	.00	.00	.00	.00	.00	
12401	512145 Life	63.43	53.88	53.88	41.74	45.00	70.32	
12401	512145 24409 Life	1.41	.00	.00	.00	.00	.00	
12401	512151 HSA Contri	.00	6,150.00	6,150.00	.00	2,907.22	4,800.00	
12401	512153 HRA Contri	2,995.16	.00	.00	1,715.00	1,715.00	.00	
12401	512153 24409 HRA Contri	14.09	.00	.00	.00	.00	.00	
12401	512173 Dental	4,426.76	5,448.00	5,448.00	3,413.19	5,448.00	6,036.00	
12401	512173 24409 Dental	166.48	.00	.00	.00	.00	.00	
12401	521220 22224 Consult	23,757.91	.00	.00	.00	.00	.00	
12401	529004 24100 Transport	.00	1,500.00	1,500.00	1,210.00	1,210.00	.00	

NEXT YEAR / CURRENT YEAR BUDGET ANALYSIS

PROJECTION: 2601 2026 BUDGET				FOR PERIOD 99						
ACCOUNTS FOR:				2024	2025	2025	2025	2025	2026	
General	Fund			ACTUAL	ORIG BUD	REVISED BUD	ACTUAL	PROJECTION	FIN	COMMENT
12401	529299	24411	Purch Care	.00	.00	4,908.56	.00	4,908.56	.00	
12401	531003		Notary Pub	40.00	.00	.00	.00	.00	.00	
12401	531100		Permit Pur	51.25	50.00	50.00	50.00	50.00	85.00	
12401	531275	24409	Recd Fee	30.00	.00	.00	.00	30.00	30.00	
12401	531301		Office Eq	.00	100.00	100.00	.00	100.00	185.00	
12401	531303		Comp Eq	.00	150.00	150.00	.00	150.00	150.00	
12401	531311		Postage	987.76	1,250.00	1,250.00	499.45	1,250.00	1,300.00	
12401	531311	24409	Postage	7.71	250.00	250.00	.00	10.00	250.00	
12401	531311	24411	Postage	41.44	.00	50.00	.00	50.00	.00	
12401	531312		Office Sup	537.61	400.00	400.00	499.80	600.00	650.00	
12401	531312	24409	Office Sup	25.00	50.00	50.00	.00	20.00	50.00	
12401	531313		Print & Dp	26.01	400.00	400.00	2.63	350.00	400.00	
12401	531313	22224	Print & Dp	465.00	.00	.00	.00	.00	.00	
12401	531313	24409	Print & Dp	.00	350.00	350.00	.00	50.00	100.00	
12401	531314		Small Item	258.48	250.00	250.00	184.93	250.00	400.00	
12401	531314	22224	Small Item	50.00	.00	.00	.00	.00	.00	
12401	531319	22224	Oth Op Sup	190.66	.00	.00	.00	.00	.00	
12401	531324		Memb Dues	2,023.45	2,045.00	2,045.00	1,930.21	2,030.00	2,088.50	
12401	531326		Advertise	.00	200.00	200.00	.00	200.00	400.00	
12401	531341		Agr & Hort	6,439.73	6,550.00	6,550.00	319.94	7,205.00	6,900.00	
12401	531343	24100	Food	.00	1,150.00	1,150.00	.00	1,150.00	.00	
12401	531348		Educ Sup	.00	50.00	50.00	.00	50.00	75.00	
12401	531351		Gas/Diesel	1,320.90	1,450.00	1,450.00	680.12	1,450.00	1,700.00	
12401	531351	24409	Gas/Diesel	60.81	150.00	150.00	.00	125.00	125.00	
12401	532325		Registr	1,399.00	1,900.00	1,900.00	1,131.00	1,800.00	2,515.00	
12401	532332		Mileage	.00	20.00	20.00	.00	20.00	20.00	
12401	532335		Meals	87.85	260.00	260.00	113.98	225.00	285.00	
12401	532336		Lodging	588.00	1,176.00	1,176.00	784.00	1,080.00	1,220.00	
12401	532339		Other Trvl	.00	20.00	20.00	.00	20.00	20.00	
12401	533225		Tele Fax	51.23	325.00	325.00	.00	300.00	325.00	
12401	533236		wirel Int	1,012.16	1,025.00	1,025.00	564.78	1,025.00	1,100.00	
12401	535242		Maint Mach	1,606.84	550.00	550.00	590.70	1,150.00	1,550.00	
12401	535242	24409	Maint Mach	39.25	.00	.00	.00	100.00	350.00	
12401	535259		Tree Plant	.00	250.00	250.00	.00	250.00	100.00	
12401	535349		Oth Sup	32.53	60.00	60.00	44.25	45.00	60.00	
12401	535349	24410	Oth Sup	90.00	80.00	80.00	.00	.00	65.00	
12401	571004		IP Tel All	775.25	765.00	765.00	701.25	723.00	1,100.00	
12401	571005		Dup Allc	1.11	263.00	263.00	241.12	241.12	7.00	
12401	571009		MIS PC	17,603.04	21,414.00	21,414.00	19,629.50	19,629.50	21,843.00	
12401	571010		MIS Sys	5,438.25	5,126.00	5,126.00	4,698.87	5,549.00	5,627.00	
12401	571020		FleetAlloc	3,791.97	2,500.00	2,500.00	.00	3,950.00	4,100.00	
12401	571020	24409	FleetAlloc	114.27	280.00	280.00	.00	200.00	240.00	
12401	591519		Oth Ins	4,350.26	4,627.62	4,627.62	4,071.10	5,237.97	4,652.77	
TOTAL Land Conservation				-3,404.14	.00	.00	103,071.56	-10,059.05	.00	

NEXT YEAR / CURRENT YEAR BUDGET ANALYSIS

PROJECTION: 2601 2026 BUDGET		FOR PERIOD 99						
ACCOUNTS FOR:		2024	2025	2025	2025	2025	2026	
General Fund		ACTUAL	ORIG BUD	REVISED BUD	ACTUAL	PROJECTION	FIN COMM	COMMENT
12402	wildlife Crop Damage							
12402	421001 St Aid	-10,963.20	-20,000.00	-20,000.00	-6,347.24	-20,000.00	-20,000.00	_____
12402	529299 Purch Care	10,962.36	20,000.00	20,000.00	12,602.25	20,000.00	20,000.00	_____
TOTAL Wildlife Crop Damage		-.84	.00	.00	6,255.01	.00	.00	_____

NEXT YEAR / CURRENT YEAR BUDGET ANALYSIS

PROJECTION: 2601 2026 BUDGET FOR PERIOD 99

ACCOUNTS FOR:		2024	2025	2025	2025	2025	2026	
General Fund		ACTUAL	ORIG BUD	REVISED BUD	ACTUAL	PROJECTION	FIN COMM	COMMENT
12404	Local Cost Share Program							
12404	421001 24403 St Aid	-2,200.00	-11,000.00	-11,000.00	.00	.00	-5,775.00	
12404	421001 24406 St Aid	-1,900.00	.00	.00	.00	.00	.00	
12404	472337 24404 Muni Rev	-53,117.96	-60,000.00	-60,000.00	-92,165.45	-92,165.45	-60,000.00	
12404	511210 24403 Wage Reg	100.00	.00	.00	.00	.00	.00	
12404	529299 24403 Purch Care	.00	11,000.00	11,000.00	.00	.00	7,000.00	
12404	529299 24404 Purch Care	40,335.50	60,000.00	60,000.00	2,850.00	60,000.00	65,000.00	
12404	529299 24406 Purch Care	1,900.00	.00	.00	.00	.00	.00	
12404	594950 24403 Oper Res	.00	.00	1,925.00	.00	.00	.00	
12404	594950 24404 Oper Res	.00	79,831.88	104,496.38	.00	.00	131,662.00	
12404	699700 24403 Res Oper	.00	.00	-1,925.00	.00	.00	-1,225.00	
12404	699700 24404 Res Oper	.00	-79,831.88	-104,496.38	.00	.00	-136,662.00	
TOTAL Local Cost Share Progr		-14,882.46	.00	.00	-89,315.45	-32,165.45	.00	

NEXT YEAR / CURRENT YEAR BUDGET ANALYSIS

PROJECTION: 2601		2026 BUDGET		FOR PERIOD 99				
ACCOUNTS FOR:		2024	2025	2025	2025	2025	2026	
General Fund		ACTUAL	ORIG BUD	REVISED BUD	ACTUAL	PROJECTION	FIN COMM	COMMENT
12405	DATCP Cost Share							
12405	421001 24405 St Aid	-48,547.70	.00	-22,000.00	.00	-22,000.00	.00	
12405	421003 St Aid GPR	.00	-12,000.00	-12,000.00	.00	-12,000.00	-12,000.00	
12405	421004 St Aid Bd	.00	-29,500.00	-64,500.00	.00	-64,500.00	-32,000.00	
12405	485200 24405 Donat Res	.00	.00	.00	-10,000.00	-10,000.00	.00	
12405	511210 24405 Wage Reg	67.88	.00	1,000.00	.00	1,535.00	.00	
12405	521219 24405 Othr Prof	10,330.55	.00	500.00	.00	500.00	.00	
12405	529299 24405 Purch Care	33,813.00	.00	17,000.00	.00	17,000.00	.00	
12405	531343 24405 Food	.00	.00	700.00	102.05	700.00	.00	
12405	531348 24405 Educ Sup	120.27	.00	500.00	.00	500.00	.00	
12405	536539 24405 Other Rent	250.00	.00	2,300.00	.00	2,300.00	.00	
12405	591519 Oth Ins	14.56	.00	.00	8.58	8.58	.00	
12405	593701 Cost Share	.00	41,500.00	76,500.00	4,680.00	76,500.00	44,000.00	
12405	594950 24405 Oper Res	.00	2,800.00	2,800.00	.00	.00	.00	
12405	699700 24405 Res oper	.00	-2,800.00	-2,800.00	.00	.00	.00	
TOTAL DATCP Cost Share		-3,951.44	.00	.00	-5,209.37	-9,456.42	.00	

NEXT YEAR / CURRENT YEAR BUDGET ANALYSIS

PROJECTION: 2601		2026 BUDGET		FOR PERIOD 99					
ACCOUNTS FOR:			2024	2025	2025	2025	2025	2026	
General Fund			ACTUAL	ORIG BUD	REVISED BUD	ACTUAL	PROJECTION	FIN COMM	COMMENT
12406	Non-Metallic Mining								
12406	411100	Gen Prop T	12,369.96	15,564.00	15,564.00	9,079.00	12,370.00	17,360.00	
12406	432004	Non Met P	.00	-900.00	-900.00	.00	-900.00	-900.00	
12406	432005	Non Met Yr	-11,335.00	-13,040.00	-13,040.00	.00	-13,835.00	-14,500.00	
12406	474175	Hwy Bill	-2,035.00	-2,410.00	-2,410.00	.00	-2,520.00	-2,520.00	
12406	531311	Postage	70.43	70.00	70.00	27.71	70.00	75.00	
12406	531312	Office Sup	.00	50.00	50.00	.00	50.00	50.00	
12406	531351	Gas/Diesel	60.00	80.00	80.00	.00	80.00	100.00	
12406	532325	Registr	325.00	350.00	350.00	175.00	175.00	175.00	
12406	532335	Meals	31.70	40.00	40.00	.00	40.00	40.00	
12406	532336	Lodging	196.00	196.00	196.00	.00	98.00	120.00	
TOTAL Non-Metallic Mining			-316.91	.00	.00	9,281.71	-4,372.00	.00	

NEXT YEAR / CURRENT YEAR BUDGET ANALYSIS

PROJECTION: 2601		2026 BUDGET		FOR PERIOD 99			
ACCOUNTS FOR:		2024	2025	2025	2025	2026	
General Fund		ACTUAL	ORIG BUD	REVISED BUD	ACTUAL	PROJECTION	FIN COMM COMMENT
12407	Farmland Easement						
12407	424001 Fed Grants	.00	-150,000.00	-150,000.00	.00	-194,000.00	.00
12407	458003 FarmEasFee	.00	-750.00	-750.00	-750.00	-750.00	-1,800.00
12407	481001 Int & Div	-10,293.89	-6,000.00	-6,000.00	-15,668.91	-15,000.00	-10,000.00
12407	531311 Postage	22.17	20.00	20.00	16.44	20.00	25.00
12407	531312 Office Sup	.00	20.00	20.00	19.85	19.85	20.00
12407	531313 Print & Dp	.00	30.00	30.00	.00	.00	20.00
12407	594816 Cap Cons	3,500.00	279,000.00	279,000.00	.00	320,460.00	4,500.00
12407	594950 Oper Res	.00	384,288.67	456,036.89	.00	.00	.00
12407	594960 Cap Res	.00	.00	.00	.00	.00	474,830.52
12407	699800 Res Cap	.00	-506,608.67	-578,356.89	.00	.00	-467,595.52
TOTAL Farmland Easement		-6,771.72	.00	.00	-16,382.62	110,749.85	.00

NEXT YEAR / CURRENT YEAR BUDGET ANALYSIS

PROJECTION: 2601		2026 BUDGET		FOR PERIOD 99				
ACCOUNTS FOR:			2024	2025	2025	2025	2025	2026
General Fund			ACTUAL	ORIG BUD	REVISED BUD	ACTUAL	PROJECTION	FIN COMM
								COMMENT
12408	County Farm							
12408	411100	Gen Prop T	-2,654.28	-2,736.68	-2,736.68	-1,596.42	-2,654.31	-2,750.49
12408	529170	Grounds Ke	1,322.32	736.68	736.68	548.11	654.31	750.49
12408	535249	Sundry Rep	.00	2,000.00	2,000.00	1,114.59	1,115.00	2,000.00
TOTAL County Farm			-1,331.96	.00	.00	66.28	-885.00	.00

NEXT YEAR / CURRENT YEAR BUDGET ANALYSIS

PROJECTION: 2601		2026 BUDGET		FOR PERIOD 99				
ACCOUNTS FOR:			2024	2025	2025	2025	2025	2026
General Fund			ACTUAL	ORIG BUD	REVISED BUD	ACTUAL	PROJECTION	FIN COMM
12409	Farm Drainage Board							
12409	411100	Gen Prop T	-9,999.96	-10,000.00	-10,000.00	-5,833.31	-10,000.00	-10,000.00
12409	514151	Per Diem	4,160.00	4,450.00	4,450.00	1,170.00	4,450.00	4,450.00
12409	521212	Legal	1,058.75	1,300.00	1,300.00	.00	1,300.00	1,300.00
12409	531312	Office Sup	53.69	200.00	200.00	52.89	175.00	200.00
12409	531313	Print & Dp	.00	100.00	100.00	.00	50.00	100.00
12409	531324	Memb Dues	40.00	100.00	100.00	100.00	100.00	100.00
12409	531349	Othr Oper	.00	100.00	100.00	.00	50.00	100.00
12409	532325	Registr	.00	100.00	100.00	.00	100.00	100.00
12409	532332	Mileage	1,682.88	2,150.00	2,150.00	295.25	2,150.00	2,150.00
12409	591513	Drain Ins	1,385.00	1,500.00	1,500.00	1,385.00	1,385.00	1,500.00
TOTAL Farm Drainage Board			-1,619.64	.00	.00	-2,830.17	-240.00	.00
TOTAL General Fund			-32,279.11	.00	.00	4,936.95	53,571.93	.00
GRAND TOTAL			-32,279.11	.00	.00	4,936.95	53,571.93	.00

** END OF REPORT - Generated by Patricia Cicero **

07/25/2025
10:01:01

Jefferson County
FLEXIBLE PERIOD REPORT

PAGE 1
glflxrpt

FROM 2025 01 TO 2025 06

ACCOUNTS FOR: 100 General Fund	ORIGINAL APPROP	TRANFRS/ ADJSTMTS	REVISED BUDGET	ACTUALS	ENCUMBRANCES	AVAILABLE BUDGET	PCT USED
12401 Land Conservation							
12401 411100 General Property Taxes	-388,487	0	-388,487	-194,243.40	.00	-194,243.41	50.0%
12401 421001 24407 State Aid	-198,798	0	-198,798	-99,399.00	.00	-99,399.00	50.0%
12401 421001 24408 State Aid	-13,003	0	-13,003	-11,703.02	.00	-1,300.34	90.0%
12401 421001 24410 State Aid	-5,550	-350	-5,900	-1,462.50	.00	-4,437.50	24.8%
12401 432099 Other Permits	-150	0	-150	.00	.00	-150.00	.0%
12401 451020 Other Fees	-200	0	-200	-180.00	.00	-20.00	90.0%
12401 451421 Crep Cancellation Fee	-280	0	-280	-34.49	.00	-245.51	12.3%
12401 457031 24100 Admission Revenue	-1,150	0	-1,150	.00	.00	-1,150.00	.0%
12401 458001 Tree Sales	-8,500	0	-8,500	-8,282.33	.00	-217.67	97.4%
12401 458005 Ag & Hortic Supply Revenue	-100	0	-100	-100.00	.00	.00	100.0%
12401 458009 Livestock Siting App Review F	-1,500	0	-1,500	-500.00	.00	-1,000.00	33.3%
12401 458013 Farmland Cert Fee	-23,970	0	-23,970	-20,225.00	.00	-3,745.00	84.4%
12401 472007 24410 Municipal Other Charges	-1,800	0	-1,800	.00	.00	-1,800.00	.0%
12401 472337 24409 Municipal Grant Revenue	-15,000	0	-15,000	-4,093.92	.00	-10,906.08	27.3%
12401 480102 24100 Misc Reimbursement	-1,500	0	-1,500	.00	.00	-1,500.00	.0%
12401 485200 24411 Donations Restricted	0	-4,959	-4,959	.00	.00	-4,958.56	.0%
12401 511110 Salary-Permanent Regular	106,919	0	106,919	52,497.73	.00	54,420.90	49.1%
12401 511210 Wages-Regular	346,441	0	346,441	173,645.77	.00	172,795.40	50.1%
12401 511220 Wages-Overtime	309	0	309	.00	.00	309.18	.0%
12401 511240 24410 Wages-Temporary	7,170	350	7,520	2,352.92	.00	5,167.08	31.3%
12401 511330 Wages-Longevity Pay	375	0	375	.00	.00	375.00	.0%
12401 512141 Social Security	32,156	0	32,156	16,427.39	.00	15,728.45	51.1%
12401 512141 24410 Social Security	0	0	0	179.98	.00	-179.98	.0%
12401 512142 Retirement (Employer)	31,139	0	31,139	15,302.52	.00	15,836.54	49.1%
12401 512144 Health Insurance	66,841	0	66,841	29,019.42	.00	37,821.37	43.4%
12401 512145 Life Insurance	54	0	54	35.64	.00	18.24	66.1%
12401 512151 HSA Contribution	6,150	0	6,150	.00	.00	6,150.00	.0%
12401 512153 HRA Contribution	0	0	0	1,715.00	.00	-1,715.00	.0%
12401 512173 Dental Insurance	5,448	0	5,448	2,982.08	.00	2,465.92	54.7%
12401 529004 24100 Transportation Services	1,500	0	1,500	302.50	.00	1,197.50	20.2%
12401 529299 24411 Purchase Care & Service	0	4,909	4,909	.00	.00	4,908.56	.0%
12401 531100 Permits Purchased	50	0	50	50.00	.00	.00	100.0%
12401 531301 Office Equipment	100	0	100	.00	.00	100.00	.0%
12401 531303 Computer Equipmt & Software	150	0	150	.00	.00	150.00	.0%
12401 531311 Postage & Box Rent	1,250	0	1,250	497.15	.00	752.85	39.8%
12401 531311 24409 Postage & Box Rent	250	0	250	.00	.00	250.00	.0%
12401 531311 24411 Postage & Box Rent	0	50	50	.00	.00	50.00	.0%
12401 531312 Office Supplies	400	0	400	499.80	.00	-99.80	125.0%

07/25/2025
10:01:02

Jefferson County
FLEXIBLE PERIOD REPORT

PAGE 2
glflxrpt

FROM 2025 01 TO 2025 06

ACCOUNTS FOR:			ORIGINAL	TRANFRS/	REVISED			AVAILABLE	PCT
100 General Fund			APPROP	ADJSTMTS	BUDGET	ACTUALS	ENCUMBRANCES	BUDGET	USED
12401	531312	24409 Office Supplies	50	0	50	.00	.00	50.00	.0%
12401	531313	Printing & Duplicating	400	0	400	2.63	.00	397.37	.7%
12401	531313	24409 Printing & Duplicating	350	0	350	.00	.00	350.00	.0%
12401	531314	Small Items Of Equipment	250	0	250	184.93	.00	65.07	74.0%
12401	531324	Membership Dues	2,045	0	2,045	1,930.21	.00	114.79	94.4%
12401	531326	Advertising	200	0	200	.00	.00	200.00	.0%
12401	531341	Agricultural & Hortiic Suppli	6,550	0	6,550	319.94	.00	6,230.06	4.9%
12401	531343	24100 Food	1,150	0	1,150	.00	.00	1,150.00	.0%
12401	531348	Educational Supplies	50	0	50	.00	.00	50.00	.0%
12401	531351	Gas/Diesel	1,450	0	1,450	680.12	.00	769.88	46.9%
12401	531351	24409 Gas/Diesel	150	0	150	.00	.00	150.00	.0%
12401	532325	Registration	1,900	0	1,900	1,131.00	.00	769.00	59.5%
12401	532332	Mileage	20	0	20	.00	.00	20.00	.0%
12401	532335	Meals	260	0	260	113.98	.00	146.02	43.8%
12401	532336	Lodging	1,176	0	1,176	784.00	.00	392.00	66.7%
12401	532339	Other Travel & Tolls	20	0	20	.00	.00	20.00	.0%
12401	533225	Telephone & Fax	325	0	325	.00	.00	325.00	.0%
12401	533236	Wireless Internet	1,025	0	1,025	486.34	.00	538.66	47.4%
12401	535242	Maintain Machinery & Equip	550	0	550	202.06	.00	347.94	36.7%
12401	535259	Tree Planter Service	250	0	250	.00	.00	250.00	.0%
12401	535349	Other Supplies	60	0	60	44.25	.00	15.75	73.8%
12401	535349	24410 Other Supplies	80	0	80	.00	.00	80.00	.0%
12401	571004	IP Telephony Allocation	765	0	765	382.50	.00	382.50	50.0%
12401	571005	Duplicating Allocation	263	0	263	131.52	.00	131.48	50.0%
12401	571009	MIS PC Group Allocation	21,414	0	21,414	10,707.00	.00	10,707.00	50.0%
12401	571010	MIS Systems Grp Alloc(ISIS)	5,126	0	5,126	2,563.02	.00	2,562.98	50.0%
12401	571020	Fleet Allocation	2,500	0	2,500	.00	.00	2,500.00	.0%
12401	571020	24409 Fleet Allocation	280	0	280	.00	.00	280.00	.0%
12401	591519	Other Insurance	4,628	0	4,628	2,220.60	.00	2,407.02	48.0%
12402 wildlife Crop Damage									
12402	421001	State Aid	-20,000	0	-20,000	-6,347.24	.00	-13,652.76	31.7%
12402	529299	Purchase Care & Services	20,000	0	20,000	6,347.24	.00	13,652.76	31.7%
12404 Local Cost Share Program									
12404	421001	24403 State Aid	-11,000	0	-11,000	.00	.00	-11,000.00	.0%
12404	472337	24404 Municipal Grant Revenue	-60,000	0	-60,000	-92,165.45	.00	32,165.45	153.6%
12404	529299	24403 Purchase Care & Service	11,000	0	11,000	.00	.00	11,000.00	.0%

07/25/2025
10:01:04

Jefferson County
FLEXIBLE PERIOD REPORT

PAGE 3
glflxrpt

FROM 2025 01 TO 2025 06

ACCOUNTS FOR:				ORIGINAL	TRANFRS/	REVISED			AVAILABLE	PCT
100 General Fund				APPROP	ADJSTMTS	BUDGET	ACTUALS	ENCUMBRANCES	BUDGET	USED
12404	529299	24404	Purchase Care & Service	60,000	0	60,000	2,850.00	.00	57,150.00	4.8%
12404	594950	24403	Operating Reserve	0	1,925	1,925	.00	.00	1,925.00	.0%
12404	594950	24404	Operating Reserve	79,832	24,665	104,496	.00	.00	104,496.38	.0%
12404	699700	24403	Resv Applied Operating	0	-1,925	-1,925	.00	.00	-1,925.00	.0%
12404	699700	24404	Resv Applied Operating	-79,832	-24,665	-104,496	.00	.00	-104,496.38	.0%
12405 DATCP Cost Share										
12405	421001	24405	State Aid	0	-22,000	-22,000	.00	.00	-22,000.00	.0%
12405	421003	State	Aid GPR	-12,000	0	-12,000	.00	.00	-12,000.00	.0%
12405	421004	State	Aid Bonded	-29,500	-35,000	-64,500	.00	.00	-64,500.00	.0%
12405	485200	24405	Donations Restricted	0	0	0	-10,000.00	.00	10,000.00	.0%
12405	511210	24405	wages-Regular	0	1,000	1,000	.00	.00	1,000.00	.0%
12405	521219	24405	Other Professional Serv	0	500	500	.00	.00	500.00	.0%
12405	529299	24405	Purchase Care & Service	0	17,000	17,000	.00	.00	17,000.00	.0%
12405	531343	24405	Food	0	700	700	102.05	.00	597.95	14.6%
12405	531348	24405	Educational Supplies	0	500	500	.00	.00	500.00	.0%
12405	536539	24405	Other Rents & Leases	0	2,300	2,300	.00	.00	2,300.00	.0%
12405	591519	Other	Insurance	0	0	0	4.68	.00	-4.68	.0%
12405	593701	Cost	Share Payment	41,500	35,000	76,500	4,680.00	.00	71,820.00	6.1%
12405	594950	24405	Operating Reserve	2,800	0	2,800	.00	.00	2,800.00	.0%
12405	699700	24405	Resv Applied Operating	-2,800	0	-2,800	.00	.00	-2,800.00	.0%
12406 Non-Metallic Mining										
12406	411100	General	Property Taxes	15,564	0	15,564	7,782.00	.00	7,782.00	50.0%
12406	432004	Non-Metallic	Permit Fee	-900	0	-900	.00	.00	-900.00	.0%
12406	432005	Non-Metallic	Annual Fee	-13,040	0	-13,040	.00	.00	-13,040.00	.0%
12406	474175	Highway	Billed	-2,410	0	-2,410	.00	.00	-2,410.00	.0%
12406	531311	Postage & Box	Rent	70	0	70	27.71	.00	42.29	39.6%
12406	531312	Office	Supplies	50	0	50	.00	.00	50.00	.0%
12406	531351	Gas/Diesel		80	0	80	.00	.00	80.00	.0%
12406	532325	Registration		350	0	350	175.00	.00	175.00	50.0%
12406	532335	Meals		40	0	40	.00	.00	40.00	.0%
12406	532336	Lodging		196	0	196	.00	.00	196.00	.0%
12407 Farmland Easement										
12407	424001	Federal	Grants	-150,000	0	-150,000	.00	.00	-150,000.00	.0%

07/25/2025
 10:01:04

 Jefferson County
 FLEXIBLE PERIOD REPORT

 PAGE 4
 glflxrpt

FROM 2025 01 TO 2025 06

ACCOUNTS FOR:		ORIGINAL	TRANFRS/	REVISED			AVAILABLE	PCT
100 General Fund		APPROP	ADJSTMTS	BUDGET	ACTUALS	ENCUMBRANCES	BUDGET	USED
12407 458003	Farmland Easement Fee	-750	0	-750	-750.00	.00	.00	100.0%
12407 481001	Interest & Dividends	-6,000	0	-6,000	-13,478.43	.00	7,478.43	224.6%
12407 531311	Postage & Box Rent	20	0	20	16.44	.00	3.56	82.2%
12407 531312	Office Supplies	20	0	20	19.85	.00	.15	99.3%
12407 531313	Printing & Duplicating	30	0	30	.00	.00	30.00	.0%
12407 594816	Capital Conserve Easement	279,000	0	279,000	.00	.00	279,000.00	.0%
12407 594950	Operating Reserve	384,289	71,748	456,037	.00	.00	456,036.89	.0%
12407 699800	Resv Applied Capital	-506,609	-71,748	-578,357	.00	.00	-578,356.89	.0%
12408 County Farm								
12408 411100	General Property Taxes	-2,737	0	-2,737	-1,368.36	.00	-1,368.32	50.0%
12408 529170	Grounds Keeping Charges	737	0	737	548.11	.00	188.57	74.4%
12408 535249	Sundry Repair	2,000	0	2,000	1,114.59	.00	885.41	55.7%
12409 Farm Drainage Board								
12409 411100	General Property Taxes	-10,000	0	-10,000	-4,999.98	.00	-5,000.02	50.0%
12409 514151	Per Diem	4,450	0	4,450	1,170.00	.00	3,280.00	26.3%
12409 521212	Legal	1,300	0	1,300	.00	.00	1,300.00	.0%
12409 531312	Office Supplies	200	0	200	52.89	.00	147.11	26.4%
12409 531313	Printing & Duplicating	100	0	100	.00	.00	100.00	.0%
12409 531324	Membership Dues	100	0	100	100.00	.00	.00	100.0%
12409 531349	Other Operating Expenses	100	0	100	.00	.00	100.00	.0%
12409 532325	Registration	100	0	100	.00	.00	100.00	.0%
12409 532332	Mileage	2,150	0	2,150	295.25	.00	1,854.75	13.7%
12409 591513	Drainage Board Insurance	1,500	0	1,500	1,385.00	.00	115.00	92.3%

07/25/2025
10:01:04

Jefferson County
FLEXIBLE PERIOD REPORT

PAGE 5
glflxrpt

FROM 2025 01 TO 2025 06

	ORIGINAL APPROP	TRANFRS/ ADJSTMTS	REVISED BUDGET	ACTUALS	ENCUMBRANCES	AVAILABLE BUDGET	PCT USED
GRAND TOTAL	0	0	0	-125,270.31	.00	125,270.31	.0%